

Choice for Bladder Scanner

CUBESCAN™

Model: BioCon-700

Mcube Statement

All executive and staffs of Mcube Technology are committed to develop and manufacture the high quality medical devices for the enhancement of quality-of-life and welfare of all human beings.



BioCon-900



BioCon-900S


Man, Machine & Medicine
Mcube Technology Co., Ltd.
 #803, 123, Bonghwasan-ro, Jungnang-gu, Seoul, Korea
 Tel: +82-2-3421-7780 Fax: +82-2-3421-7076
 Homepage: www.mcubetech.co.kr
 E-mail: mcube@mcubetech.co.kr

Distributor

MCA_BioCon_700_EN(Rev.1.4.1)

Bladder Volume Measurement System

CUBESCAN™



BioCon-700



Bladder Scanner! Why?

What is CUBEscan

CUBEscan Bladder Scanner is the portable 3D ultrasound medical device to measure quickly and accurately the bladder volume and PVR(Post-Void Residual volume) with live image of Pre-scan.

Live image of Pre-scan

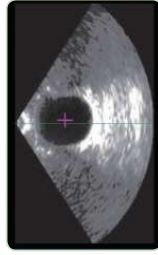
It shows live ultrasound image before scanning and hence enables a user to locate easily the bladder position for more accurate measurement.

The Built-in Printer

It enables the immediate on-site printing.

The Color Touch Screen

It's easy to type in with on-screen keyboard.



Bladderpoint™

Display a conspicuous bladder point mark for real-time tracing of bladder position during Pre-scan.

Child Mode

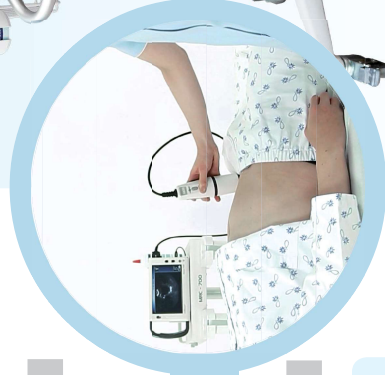
Users can measure even a small amount of volume for children more accurately in child mode.

ACT (Auto-Construction Technology)

By using 3D volume estimation modeling, bladder volume is accurately calculated in case of off-center scans.

Grip and Scan

It maximizes the mobility.



Easily Locate Bladder Position & Get Accurate Volume

Clinical Applications

Medical Service

- Urology
- Obstetrics-Gynecology
- Geriatrics
- Pediatrics
- Rehabilitation
- Surgical
- Operation Room
- Recovery Room
- Emergency
- Intensive Care
- Extended Care
- Home Health

Effects

- Diagnose urinary retention and evaluate many common urological conditions
- Prevent unnecessary catheterization
- Reduce rates of urinary tract infection
- Monitor post-operative recovery
- Screen different types of incontinence to determine appropriate care
- Help caregivers manage and treat incontinence
- Reduce costs and save staff time

Characteristics

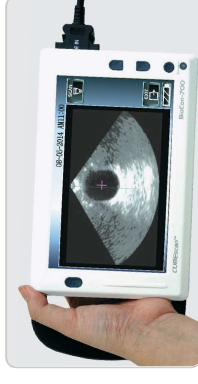
- Non-Invasive Measurement
- Live image of Pre-scan
- Review of scanned bladder images
- Save and Retrieval of scanned information
- PC-transfer for scan data
- Built-in Printer

Feature

- Voice Recording and Playback
- 3 Patient Types for Male, Female, and Child
- The Increased Mobility with Large Capacity Battery Pack
- Fast Patient ID input & Editing using Touch Screen
- Operation on Battery and/ or Adapter
- Easy PC Transfer (USB cable or SD Card)
- Self-diagnosis function

External SD card makes it possible to save lots of the patient scan data and to review on monitor

Grip and Scan



Technical Specifications

Display	7" TFT-LCD (WVGA) 16.7M colors (Color Touch Screen)
Volume Range	0~999ml Accuracy: ±15%, 15ml(0.999ml) ¹⁾
Printer	Built-in (50mm width) thermal printer
Ultrasound Probe	3D Sector Scan, 2.6MHz ultrasound frequency B-Mode Scan, Scan Angle: 120°
Power	3A, 9V DC Adapter (Adapter Input: AC 100 ~ 240V 50/60Hz) 7.4V battery pack (Li-Ion)
Dimension	68mm(L) x 202mm(W) x 130mm(H) (0.92Kg)
Ultrasound Output Parameter	Maximum (I _{ms}) ≤1mW/cm ² Maximum (I _{avg}) ≤10W/cm ² Maximum MI (Mechanical Index) ≤0.9max Transducer diameter: 10mm Transducer Resonant Frequency: 2.6MHz

- Consumables: Battery Pack, Thermal Paper, Ultrasound Gel
- Selling Case (Optional). The Spec of Rolling Cart may differ according to local supplier
- 1) According to the scanning instruction on a Mode Technology Tissue Equivalent Bladder Phantom